

---

**COOBER KOVE 450 QUICKSHIFTER – Installation Guide**

---

**Step 1: Remove Battery**

Carefully remove the seat and disconnect the battery. Remove the battery from its holder.



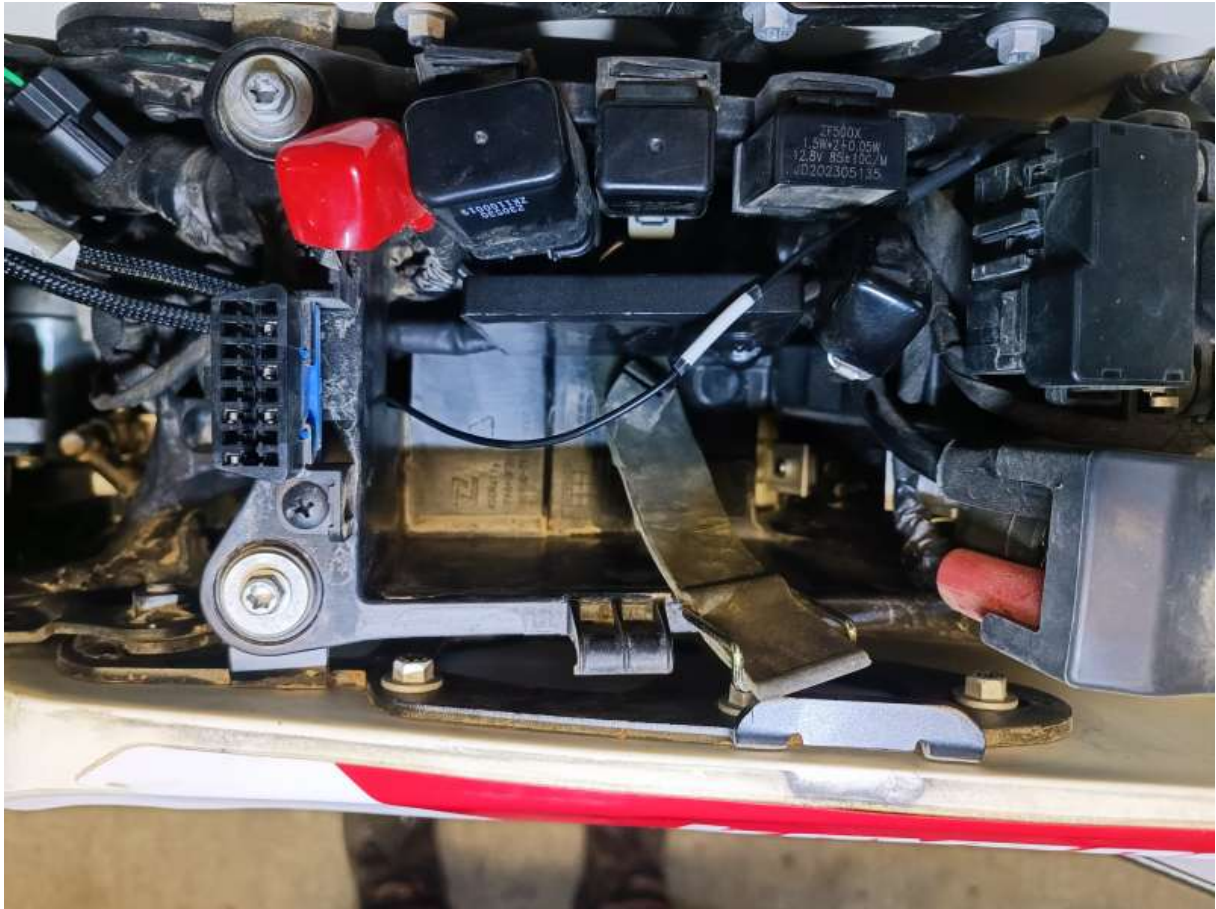
**Step 2: Remove Right Side Fuel Tank**

Unscrew and lift off the right side of the fuel tank to access the harness area.



**Step 3: Place QUICKSHIFTER into the Battery Holder**

Insert the QUICKSHIFTER module into the battery holder, next to the battery slot.



**Step 4: Route Harness Through the Battery Holder Opening**

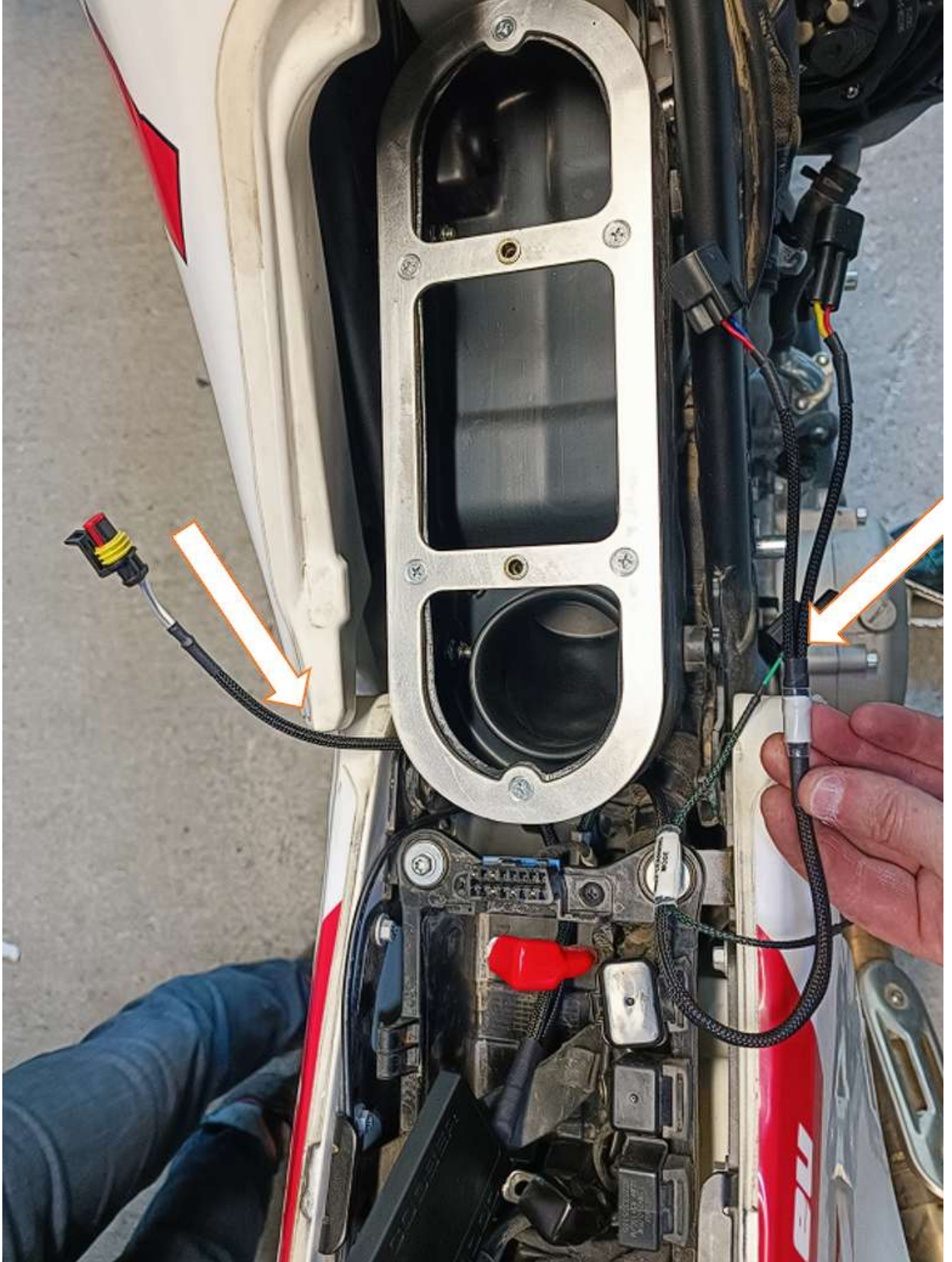
Gently guide the harness through the designated opening of the battery holder.



**Step 5: Route the Harnesses**

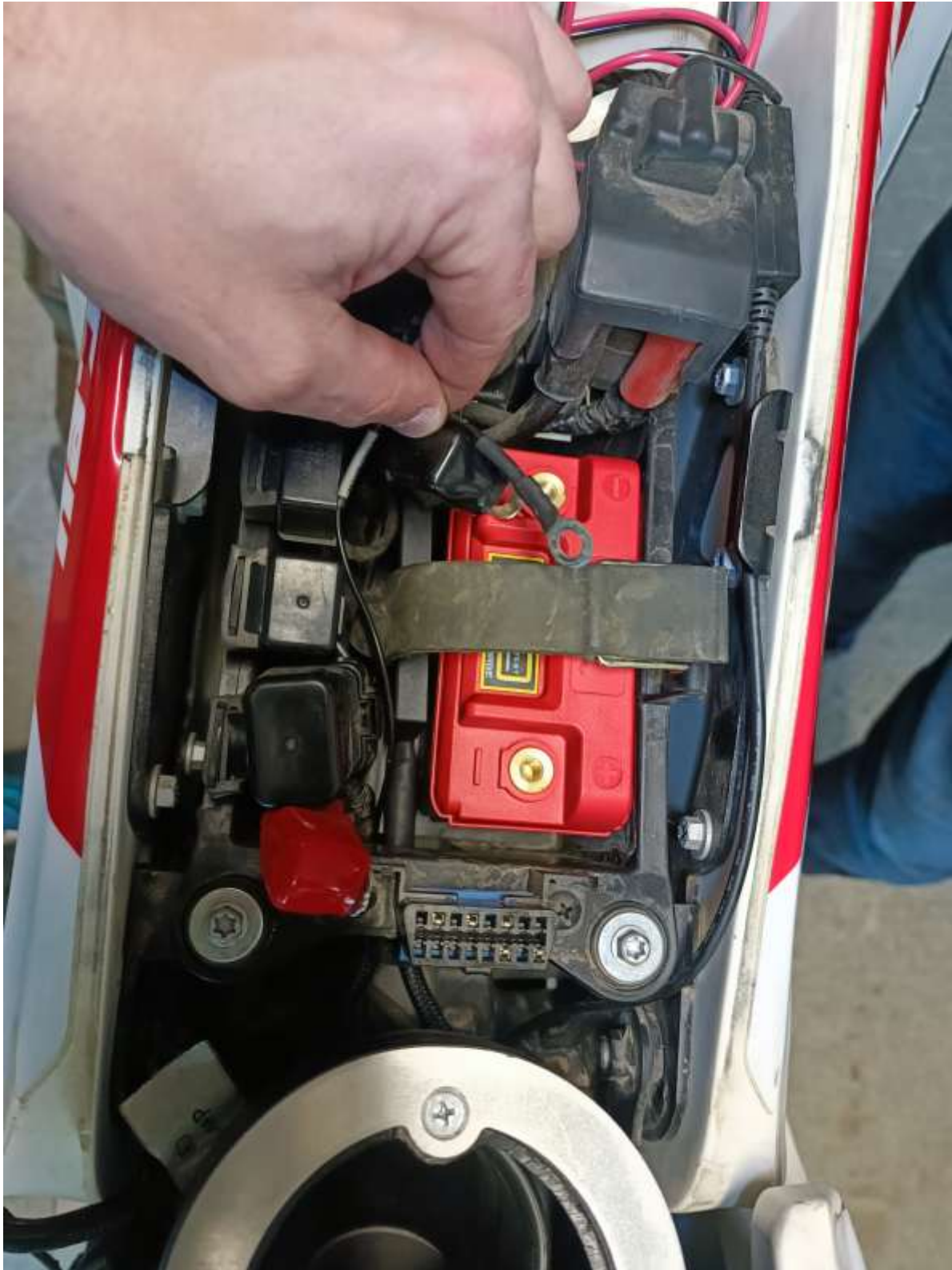
- **Longer harness:** Route it on the **right side**, underneath the airbox.

- **Shorter harness (QS sensor):** Route it on the **left side**, downward toward the gear shifter.



**Step 6: Reinstall Battery**

Put the battery back in place and **secure both battery and QUICKSHIFTER** with the rubber holder.



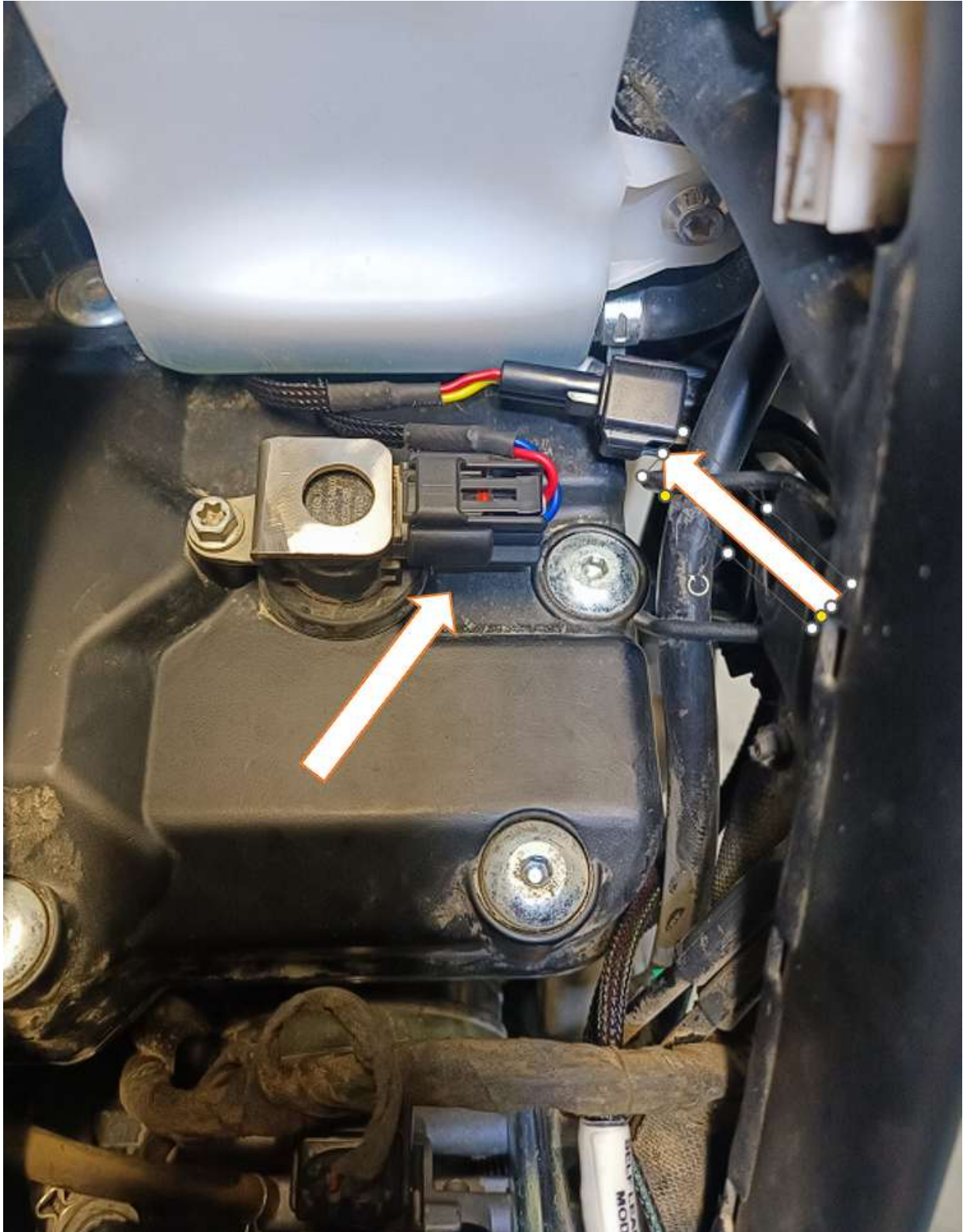
**Step 7: Connect Longer Harness to Ignition Coil**

From the **right side**, connect the longer harness to the ignition coil.

- Plug **female connector from Quickshifter** harness to the coil
- Plug **original female connector** to the male plug of the Quickshifter harness (**Y-Connection**)



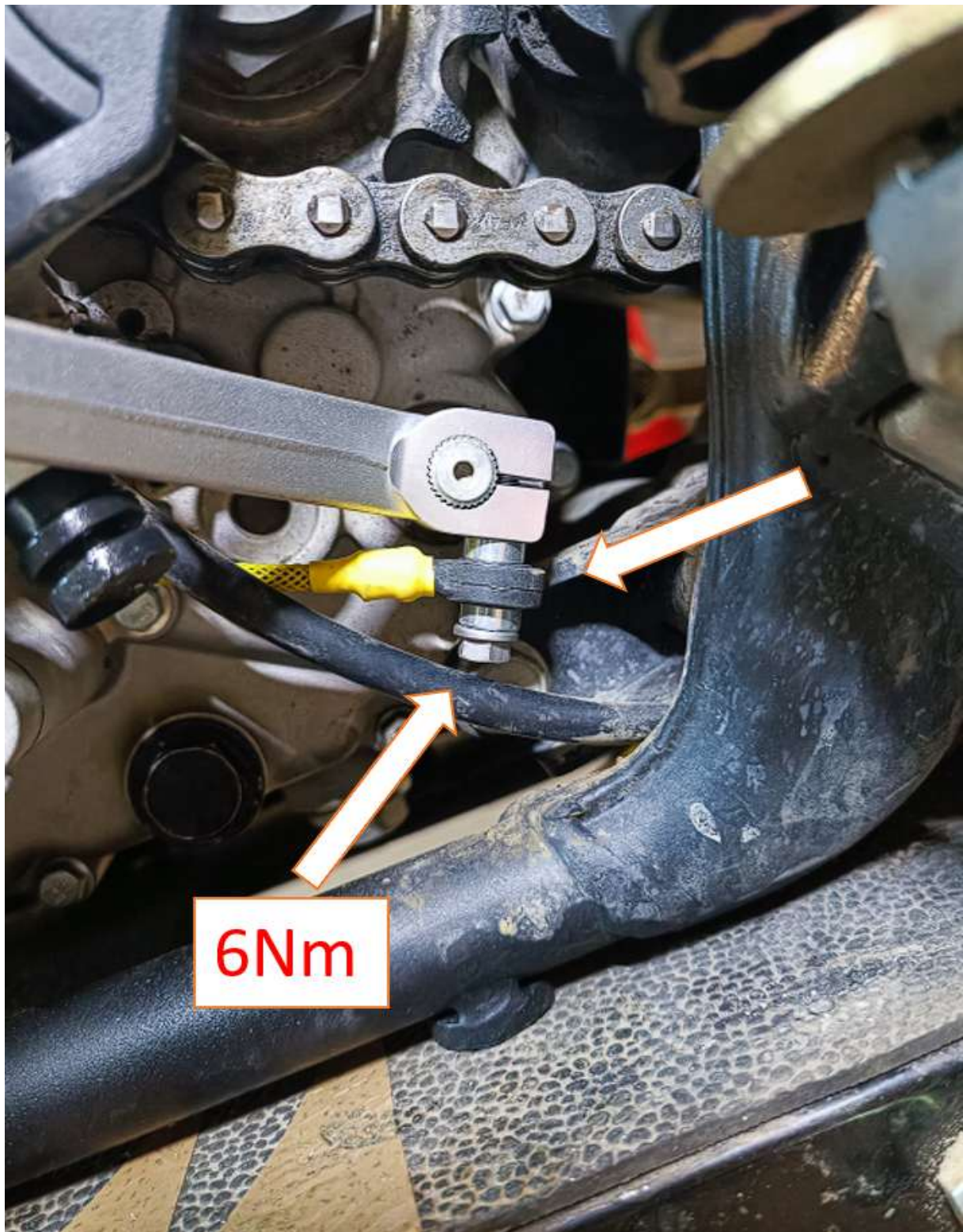


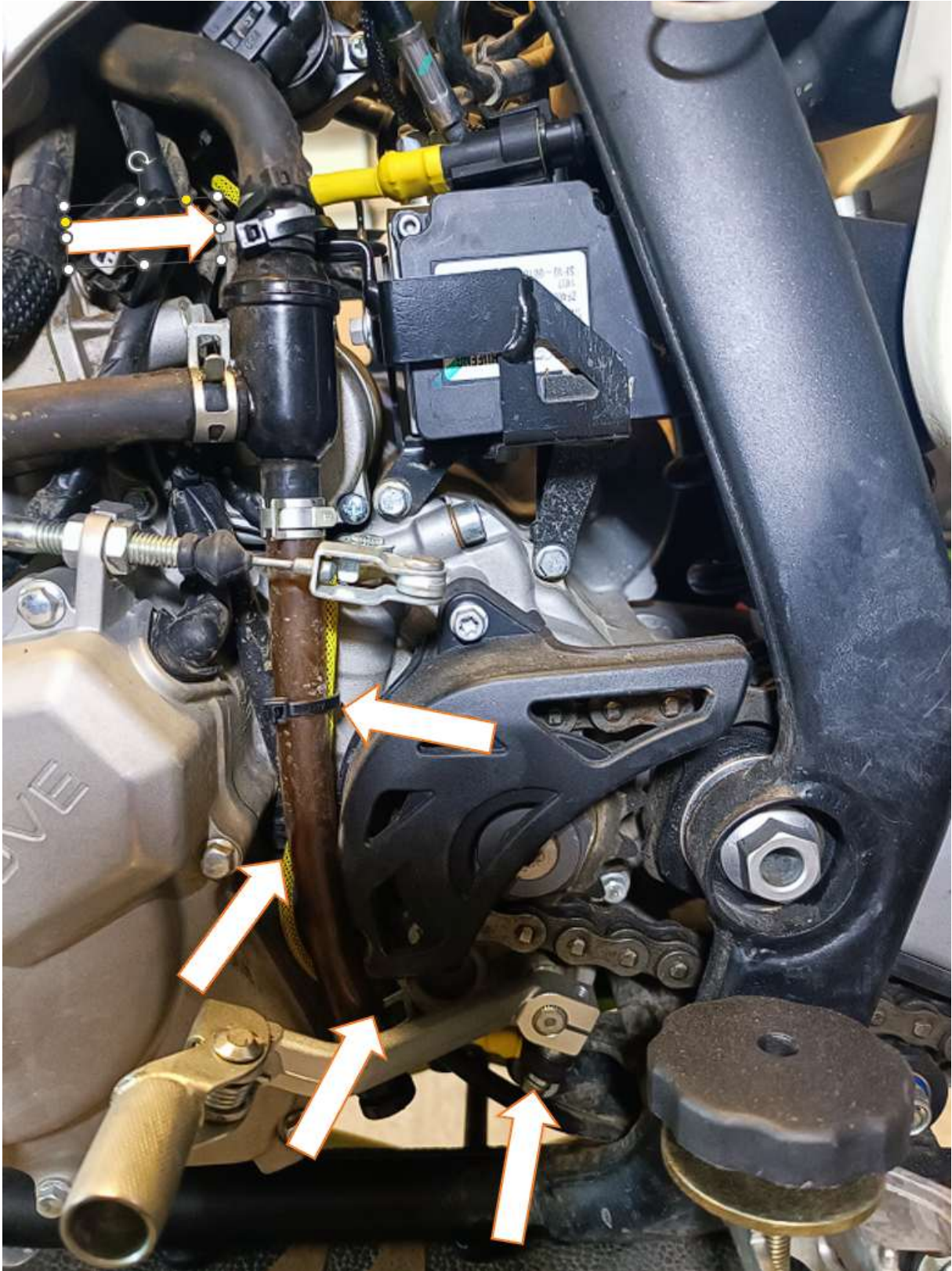


**Step 8: Mount Quickshifter Sensor to Gear Shifter**

Mount the sensor to the gear lever.

**⚠ IMPORTANT:** Tighten the mounting bolt to exactly **6 Nm** torque.





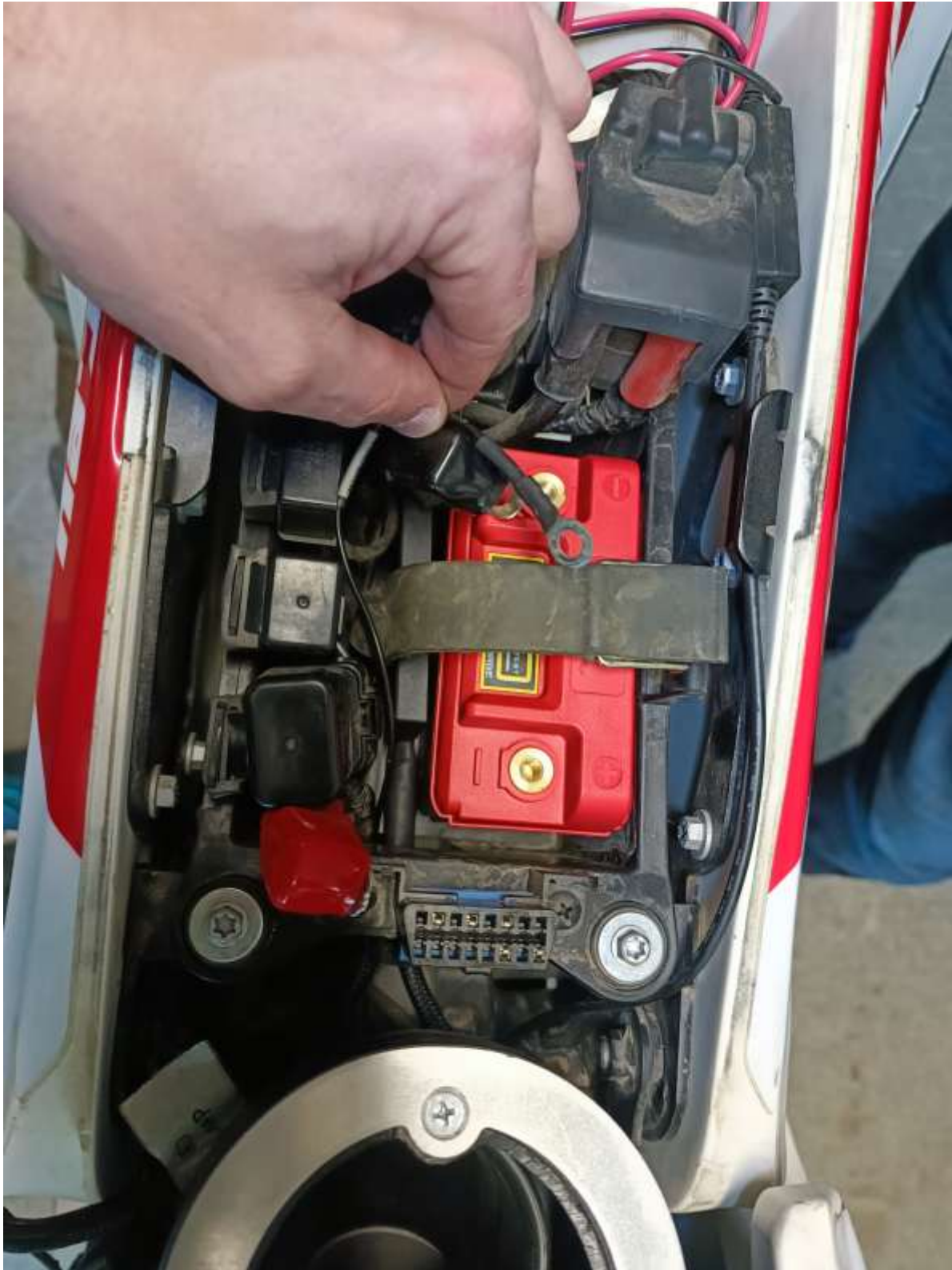
**Step 9: Connect Sensor to Quickshifter Harness**

Connect the sensor plug to the corresponding connector on the harness.



**Step 10: Connect Ground Wire**

Secure the ground wire to the **negative terminal** of the battery.



**Step 11: Fix All Harnesses**

Use zip ties to neatly and safely secure all harnesses along their routes.

---

**Step 12: Reinstall Fuel Tank**

Place the right-side fuel tank back and fasten it securely.

---

** Installation Complete – Proceed to Calibration**

Now that everything is installed, follow the calibration steps included in the Quickshifter manual.